



ETCHGEL

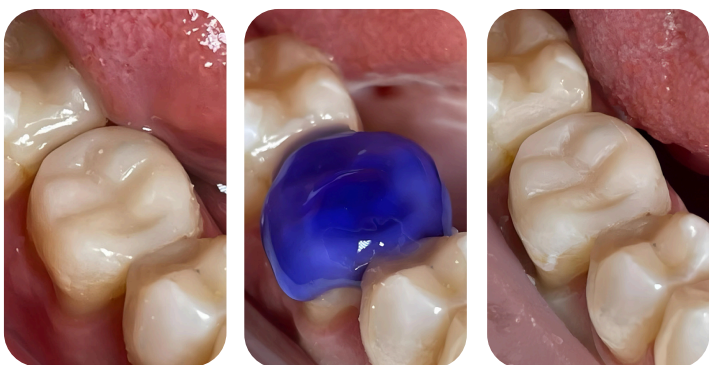
**Leading manufacturer
of dental etchants**

ETCHGEL is a medical device containing 36% orthophosphoric acid in gel form, used and appreciated by dental professionals. The product is distinguished by its gel consistency, contrasting dye, and easy rinsing, ensuring full control and safety during the procedure.

Full control

Gel consistency

ETCHGEL is in **gel form**, ensuring stability and precision during application. The optimal gel consistency guarantees uniform distribution **without trapping air** beneath the gel, preventing the formation of under-etched areas.



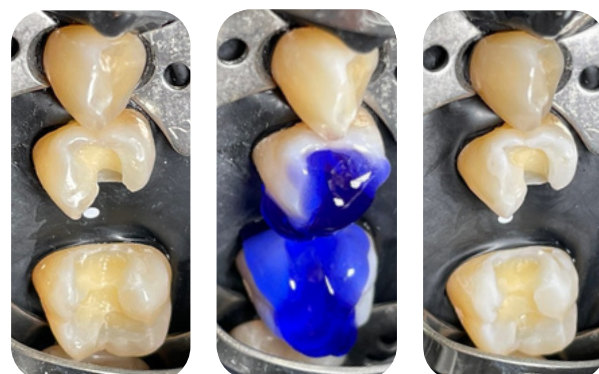
Gel consistency:

- **Facilitates precise dosing** – only the required amount of the product is applied.
- **Ensures stability** – does not spread, even under challenging clinical conditions.
- **Improves visibility** – thanks to the contrasting dye, the gel is always clearly visible.
- **Facilitates control of etching time** – it is easy to assess where the product is applied and how long it has been acting.

Precise etching

No run-off

The gel consistency ensures that the product remains exactly at the application site, **without the risk of run-off**. This guarantees **full control and safety during** the etching process. As a result, the procedure is faster and more precise, and treatment becomes more comfortable. Despite its light and seemingly fluid consistency, **ETCHGEL** reliably remains in place even **on upper teeth**.



No discoloration

Easy rinsing

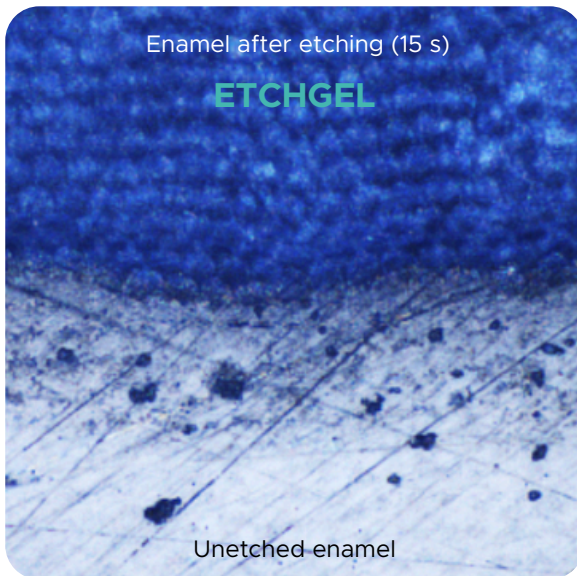
The gel is removed **quickly and completely** with a short stream of water, leaving the tooth surface **clean and ideally prepared** for subsequent stages of the adhesive procedure. It leaves **no discoloration or residues**, making the entire process simpler, faster, and more comfortable for both the clinician and the patient.

Quality confirmed by testing

Each batch of **ETCHGEL** undergoes detailed **physicochemical testing**, including verification of orthophosphoric acid content as well as gel homogeneity and consistency using advanced **rheological measurements**. This ensures that the product is not only safe and clinically effective, but also provides **consistent, high quality**. For 25 years.



Microscopic image of enamel after etching



Example of tooth surface etching with **ETCHGEL** prior to orthodontic bracket bonding.



*Filling without an additional Luer Lock syringe adapter

The syringe can be refilled **without** the use of an additional Luer Lock syringe **adapter**, which significantly saves time and simplifies the workflow. This is a simple and quick method that ensures **ETCHGEL** is always ready for use.

*applies to **ETCHGEL**
60 g

*The set contains as many as 50 tips

Each package contains as many as **50 precision tips**, ensuring convenience, hygiene, and comfortable use over an extended period without the need for additional purchases.



Without an adapter

Available packaging

- 2,6 g + 2 tips
- 6,5 g + 2 tips
- 13 g + 2 tips
- 60 g + 3 small syringes + 50 tips



Arkona Laboratorium Farmakologii Stomatologicznej
21-025 Niemce, Nasutów 99 C, Poland
+48 887 883 005, www.arkonadent.com

