



ARKONA

Created by Dentists for Dentists

Making a splint stabilizing the teeth of the lower arch based on COMCORD on teeth 33-43

 QUICK AND EFFECTIVE SOLUTIONS TO SERIOUS PROBLEMS

ETCHGEL



www.arkonadent.com



CASE DESCRIPTION



ARKONA



- The problems that patients with periodontal disease struggle with are the loss of the alveolar bone, which causes the gum margin to lower and the teeth to become loose and unstable. Such a situation requires urgent intervention by a specialist to immobilize and secure the teeth.
- A proven method in such cases is to use COMCORD to splint the mobile teeth.
- The problem is then solved in a very aesthetic way, which will provide the patient with a sense of security and self-confidence.





ARKONA



STAGE 1 – PREPARATION FOR THE PROCEDURE



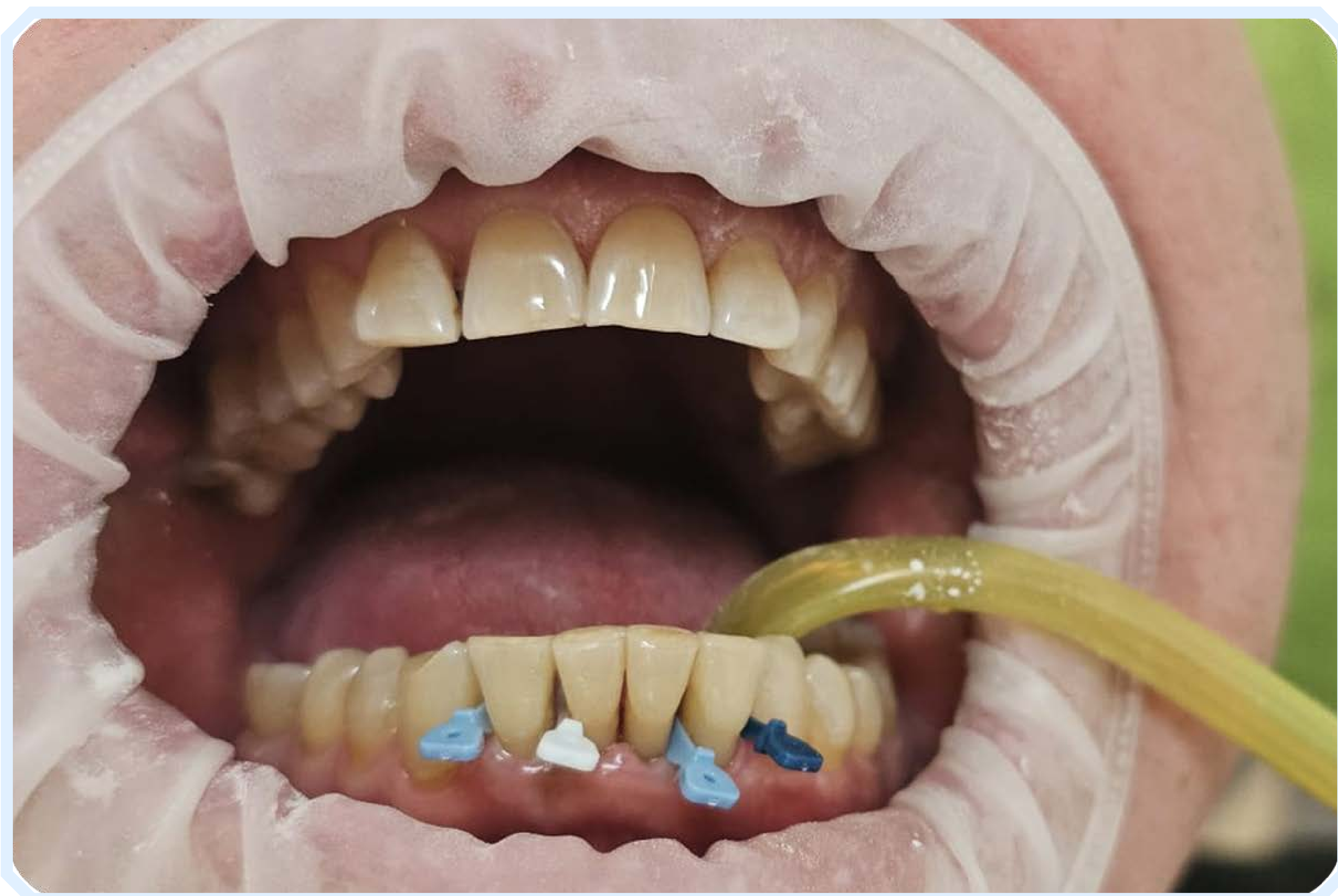
- Before starting the convergence, we measure a section of COMCORD, slightly longer than the section in the arch. The teeth that will be connected with the composite splint are etched using ETCHGEL. Then we dry them thoroughly.





ARKONA

➤ STAGE 2 - STABILIZATION OF TEETH IN THE ARCH



- Before applying the bonding system, the teeth should be stabilized using wedges. This will allow for precise and comfortable application of COMCORD and will prevent the composite material from getting into hard-to-clean places.



ARKONA



STEP 3 - COMCORD APPLICATION



- After the teeth have been properly prepared, a measured section of COMCORD should be gradually placed on the teeth of the lower arch. The fragment is also introduced into the interdental spaces, and each tooth should be secured on three sides by COMCORD. Then we move on to modeling so that COMCORD adheres precisely to the tooth, providing a smooth surface.





STEP 4 - FITTING IN OCCLUSION



ARKONA



- In order for the splint to function properly, the teeth should be adjusted occlusally using tracing paper, ensuring equal contact. With proper hygiene, the loosening process will not progress, and the teeth will be stable and protected for many years!





YOUR BENEFITS OF USING COMCORD



ARKONA



- **Single-visit and non-invasive stabilization of teeth in the arch**
- **Satisfaction of the patient's needs** - gratitude and satisfaction
- **Easy to make corrections** - good aesthetics and functionality of the tooth for many years
- **Saving time during the procedure** - your profit
- **Possibility to cure patients who we have lost for various reasons so far**





ARKONA

Created by Dentists for Dentists



www.arkonadent.com