



ARKONA

Created by Dentists for Dentists

Construction of a bridge based on COMCORD on teeth 35-37

 QUICK AND EFFECTIVE SOLUTIONS TO SERIOUS PROBLEMS

ETCHGEL • MASTERBOND • GLAZE • COLOURANT



www.arkonadent.com



CASE DESCRIPTION



ARKONA



- The photo shows the initial state

- Many patients postpone replacing their missing teeth for too long.
- This leads to situations where insufficient bone conditions do not allow for implantation. In the past, the only solution in such cases were removable restorations, e.g. skeletal dentures with unsightly clasps visible when smiling.
- An excellent alternative that allows for aesthetic and durable replacement of missing teeth is COMCORD. Easy to use, it allows you to help patients who are pressed for time and those who, for financial reasons, cannot afford implant prosthetic work.
- In the case of a patient with a missing molar (36), the smile was restored using COMCORD and the composite material CREATE.

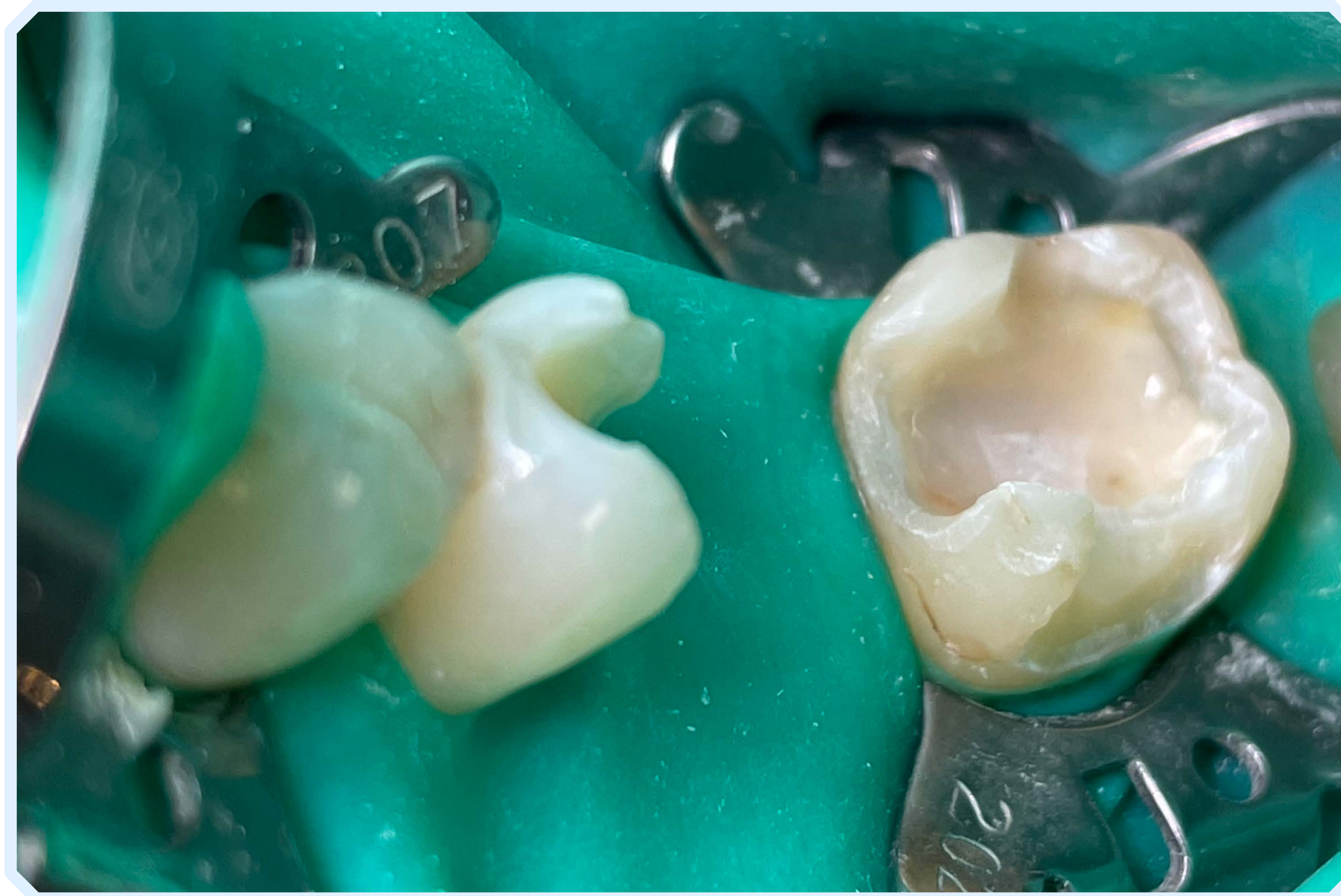




ARKONA



STAGE 1 – PREPARATION FOR THE PROCEDURE AND PREPARATION



- Before starting the procedure, the work area should be secured with a rubber dam, which ensures comfort and precision of work. Then, the old composite fillings should be removed from the abutment teeth.

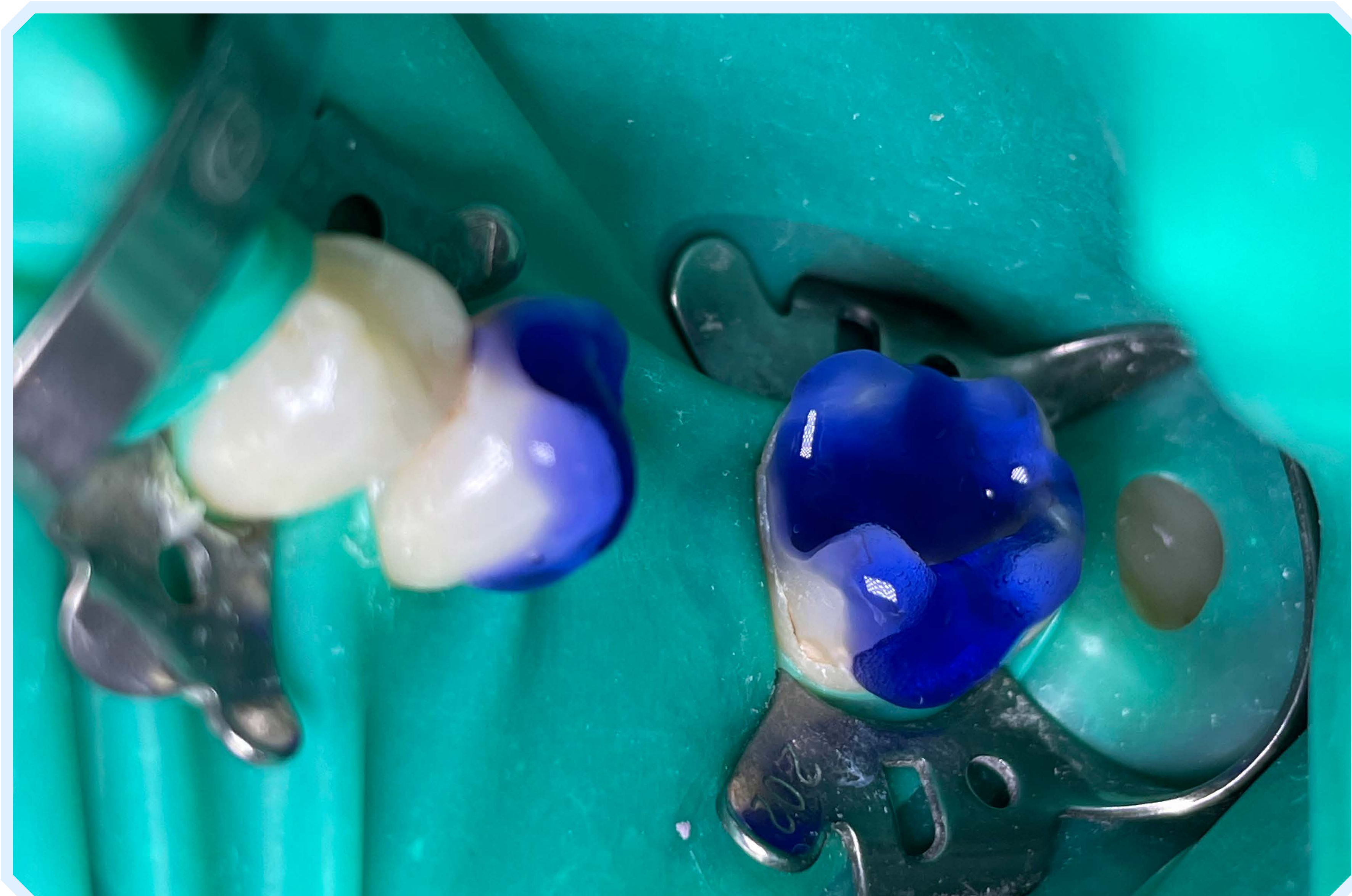




STAGE 2 - ETCHING



ARKONA



- We etch the prepared teeth with **ETCHGEL** for 10 seconds for dentine and 30 seconds for enamel, then thoroughly rinse the cavity with water and dry it. This step is extremely important because it determines the penetration of the bonding system deep into the tissues, which ensures long-term adhesion of the restoration.





ARKONA

STEP 3 - MEASURING THE COMCORD FRAGMENT



- A retraction cord can be used to measure the needed section of COMCORD. Its length should correspond to the distance from the end of the preparation of one abutment tooth to the end of the preparation of the other abutment tooth.



STAGE 4 - BONDING



ARKONA



- Using a microbrush, we thoroughly rub in the **MASTERBOND** bonding system. Then we dry it gently so that the solvent evaporates and we irradiate the tooth for 15 seconds. The aim of this stage is to bond the composite material with the tooth tissues, which will make the work durable for many years.





ARKONA



STAGE 5 - CREATING THE FOUNDATIONS FOR REBUILDING



- Using **CREATE** composite, we create the cervical part of the tooth on which **COMCORD** will be modeled and place it between the abutment teeth on the cleaned rubber dam.
- This step will facilitate the reconstruction of the anatomical shape of the patient's tooth.





ARKONA



STEP 6.1 - COMCORD MODELING - FRAGMENT APPLICATION



- The cut COMCORD section is placed between the preparation ends of both abutment teeth so that it adheres precisely to both the teeth and the composite foundation.





ARKONA



STEP 6.2 - COMCORD MODELING - FRAGMENT INTEGRATION



- Using your favorite tools and optional resin, we integrate and flatten a piece of filaments on the surface.
- It is very important that there are no air bubbles between the layers, which would worsen the durability and mechanical properties of the restoration.





ARKONA



STEP 6.3 - COMCORD MODELING - STRENGTHENING THE STRUCTURE



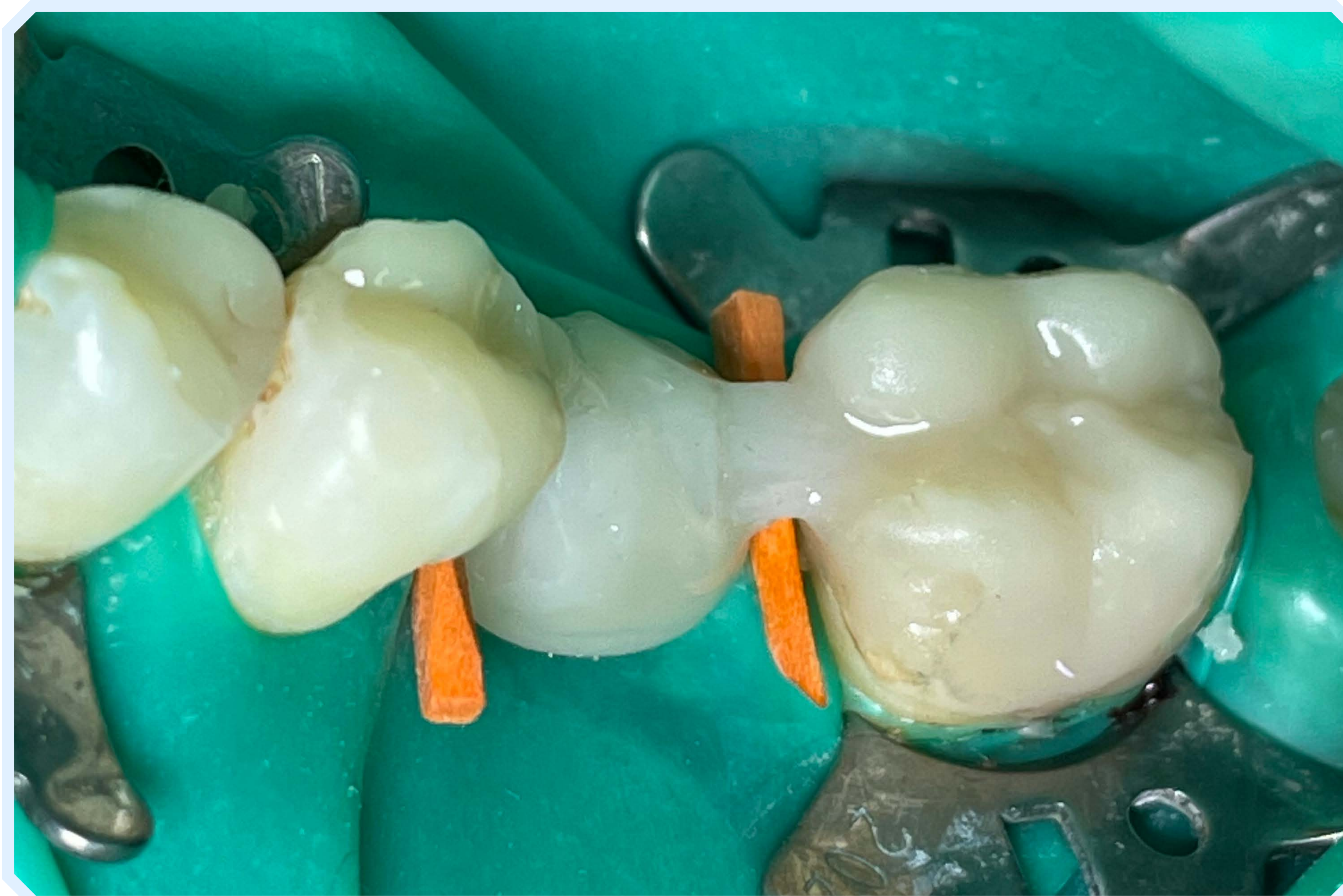
- To increase the resistance of the restoration to chewing forces, the frame can be reinforced with additional COMCORD sections. This will extend the durability of the work and reduce the risk of cracking or damage to the work as a result of use.





ARKONA

➤ STAGE 7 - REBUILDING THE CHEWING SURFACE OF THE ABUNDLE TEETH



- Step 6.2 should be repeated and additional sections of COMCORD should be meticulously integrated with the remaining composite fragments. Then, the cervical spaces under the contact points are secured with wedges. The remaining parts of the abutment teeth are rebuilt using CREATE composite in accordance with anatomical principles, which guarantees proper function and aesthetics of the restoration.



ARKONA



STAGE 8 - REBUILDING THE CHEWING SURFACE OF THE MISSING TOOTH



- After rebuilding the abutment teeth, we move on to filling in the remaining part of the missing tooth crown. Then we move on to adjusting the reconstruction in occlusion using articulating paper, taking care of even contacts on the teeth.





STAGE 9 - REPLACING A MISSING TOOTH



ARKONA



- Using the selected composite material, we build a crown on the polymerized fragment. Thanks to the compatibility of the composite with COMCORD, modeling the crown is simple and allows you to fill the missing tooth without the intervention of a technical laboratory during a single visit while maintaining the aesthetic requirements of the patient!





STEP 10.1 - CHARACTERIZATION - ETCHING



ARKONA



- When the contacts on the teeth are even, we can start finishing the work. For this purpose, we etch the restored bridge with **ETCHGEL**.





STEP 10.2 - CHARACTERIZATION - PREPARATION



ARKONA



- The bridge should be thoroughly rinsed and dried. Only then can **COLOURANT** be applied to the work prepared in this way in order to give it a natural shades.





STEP 10.3 - CHARACTERIZATION - COLORING



ARKONA



- With the precise tip of the **COLOURANT** we apply a small amount of material on the chewing surface of the restored teeth. Then we carefully distribute the product and polymerize it.
- Such characterization will make the new restoration similar to the rest of the patient's smile. Thanks to this, it will be uniform, which will increase the patient's self-confidence.





ARKONA



STEP 10.4 - CHARACTERIZATION - GLAZING



- Using a microbrush, we apply a thin layer of **GLAZE** to the bridge. We carefully spread the material over the surface of the restoration, and then polymerize it. This step saves a lot of time that would be spent on mechanical polishing. Thanks to **GLAZE**, we get the desired shine in a few seconds!





YOUR BENEFITS OF USING COMCORD



ARKONA



- **Single-visit filling of missing teeth.**
- **Satisfaction of patient needs** - gratitude and satisfaction
- **Easy to make corrections** - good aesthetics and functionality of the tooth for many years
- **Saving time of the procedure** - your profit
- **Non-invasive possibility of filling missing teeth.**
- **Possibility of curing patients**, whom we have lost for various reasons so far





ARKONA

Created by Dentists for Dentists



www.arkonadent.com