



Created by Dentists for Dentists



**ARKONA**

# Splinting of loose teeth with **COMCORD** on teeth 32-42



QUICK AND EFFECTIVE SOLUTIONS TO SERIOUS PROBLEMS

ETCHGEL



[www.arkonadent.com](http://www.arkonadent.com)



## CASE DESCRIPTION



ARKONA



- The photo shows the initial state.

- A patient using a complete upper denture presented with loose lower incisors and advanced horizontal atrophy of the mandibular alveolar process. In such a case, the solution may be tooth extraction and the creation of a denture, but the patient wanted to stabilize the lower teeth. He wanted to keep his own teeth as long as possible and wanted to avoid invasive treatment methods.
- In order to meet the patient's expectations, it was decided to use **COMCORD**, in a minimally invasive way, ensures teeth stabilization and prolongs their functionality
- The low cost of the procedure and the short time of execution speak for the use of **COMCORD** in the procedure of teeth splinting.







**ARKONA**



## STAGE 1 - CLEANING AND REMOVAL OF DENTAL DEPOSITS



- A thorough cleaning of dental deposits was performed. Removing tartar and plaque is crucial to ensuring the durability of the work, as it eliminates potential sources of infection and increases the adhesion of composite materials. This will make the process of tooth stabilization more effective and long-lasting.







## STEP 2 - TEETH PREPARATION AND SEPARATION



**ARKONA**



- The teeth were set in a correct position with wedges and separated with a teflon tape. This step is necessary to ensure adequate access to the interdental spaces and to enable precise application of the material. The separation allows for precise etching and application of the bonding system, which increases the stability and durability of the restoration.



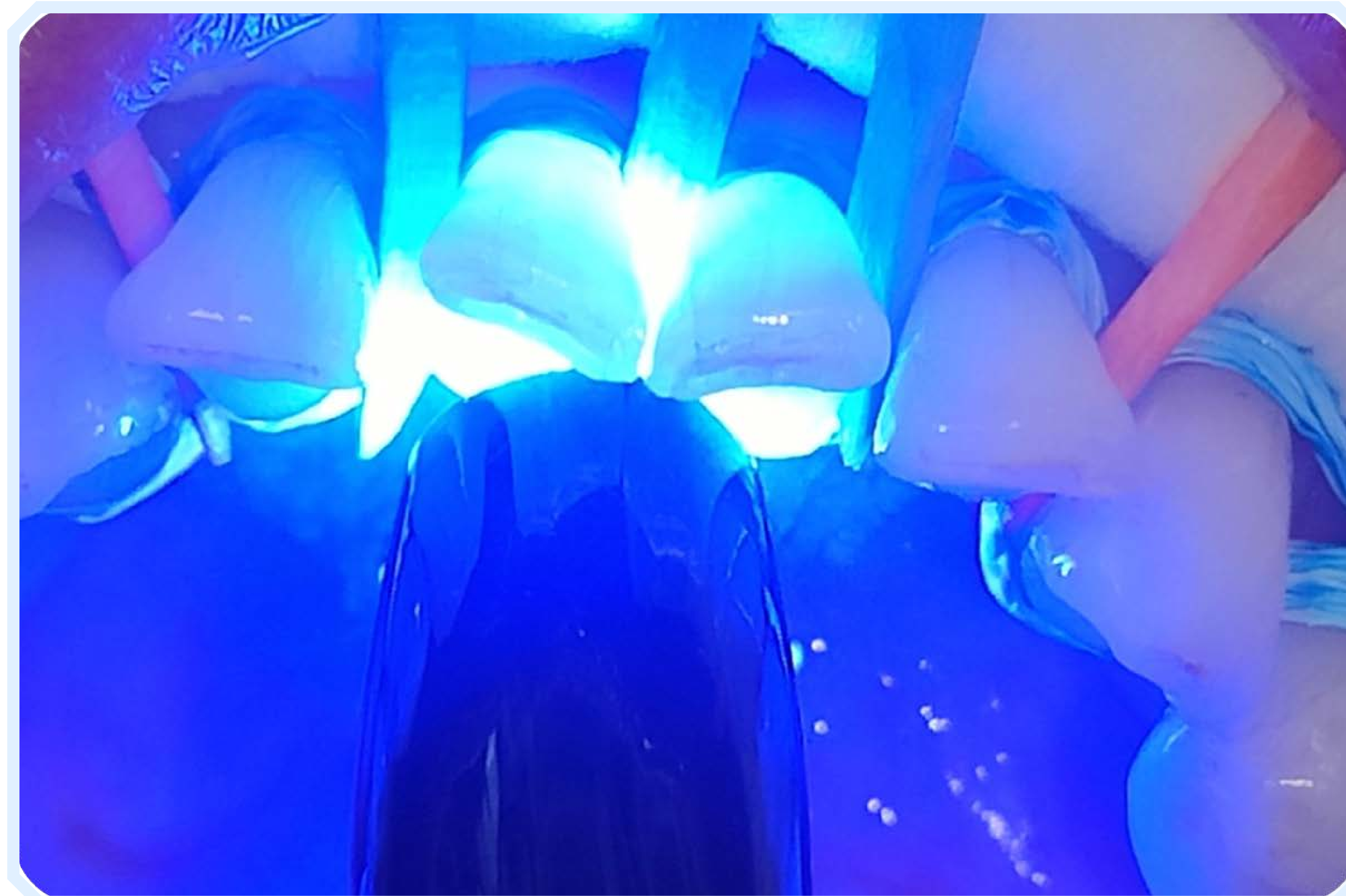




### STEP 3 - ETCHING AND BONDING



**ARKONA**



- The tooth surfaces were etched with **ETCHGEL** and the bonding system was applied, which was exposed to light for 30 seconds. Etching the tooth surfaces is essential for obtaining proper penetration of the bonding system. This ensures better adhesion of the material to the tooth surface, which is crucial for the durability of the restoration. The appropriate procedure reduces the risk of complications in the work, which translates into the ease of the doctor's work and the effectiveness of the treatment.



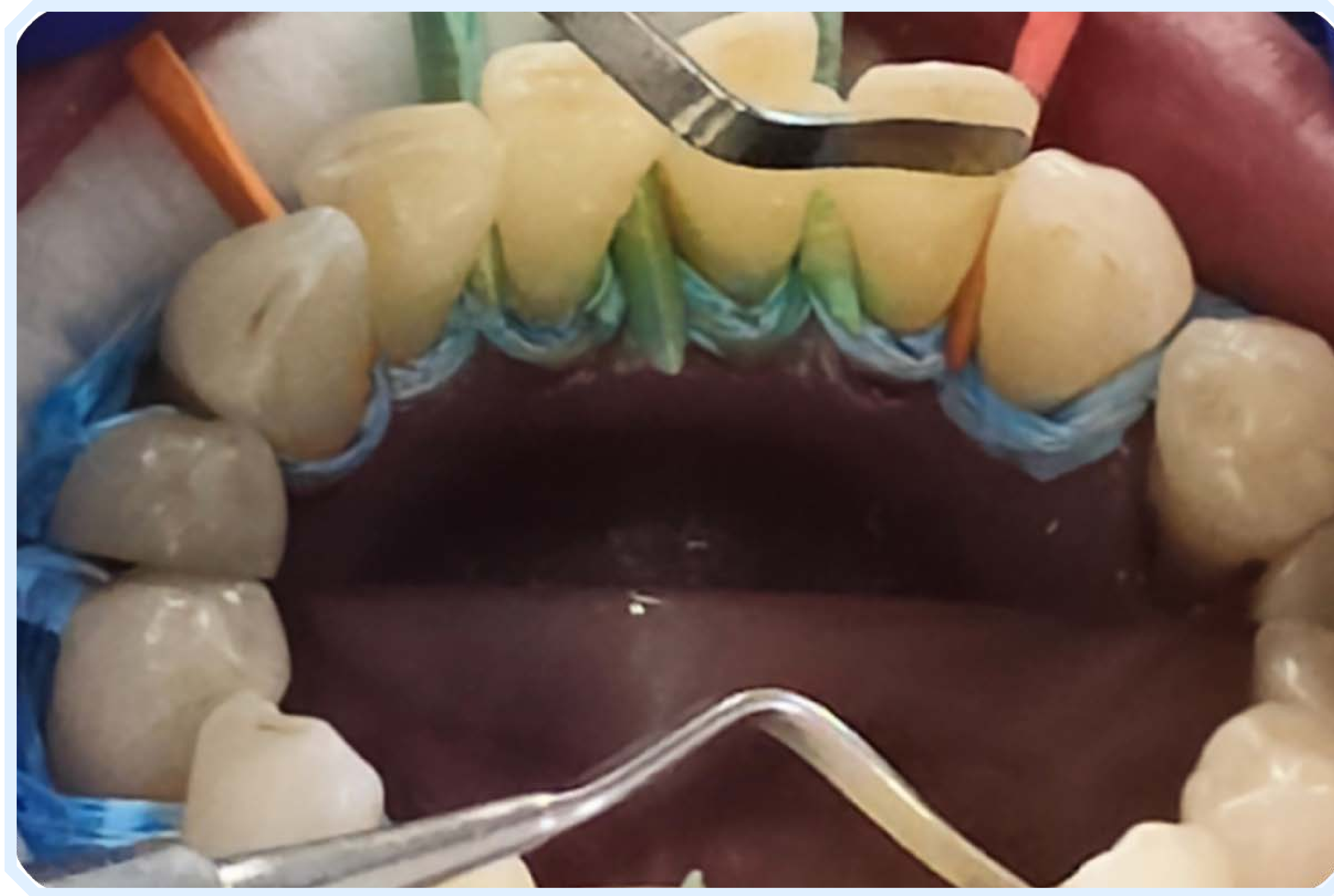




**ARKONA**



## STAGE 4 - COMCORD APPLICATION



- The appropriate fragment of **COMCORD** was measured and then placed on the prepared lingual surfaces of the anterior teeth. The **COMCORD** application process is simple and convenient, allowing for quick and precise adjustment to the shape of the dental arch. Thanks to the flexibility of the material, **COMCORD** can be easily modeled, which improves clinical work and allows for individual adjustment to the needs of each patient.







**ARKONA**

## ➤ STAGE 5 - CREATION OF THE LINGUISTIC SURFACE



- Minor corrections were made with composite material to create a full lingual surface of the dental arch. Accurate modeling of the composite ensures the aesthetics and functionality of the teeth. Thanks to this, a natural shape and appropriate thickness of the restoration were obtained in one visit, which provided the patient with a sense of security and comfort of biting.





**ARKONA**

## ➤ STAGE 6 - REMOVING PROTECTION AND POLISHING



- The protection was removed and the final polishing of the work was performed. The polishing process is necessary because it makes the surface of the restoration smooth and aesthetic. The final smoothing ensures patient comfort and minimizes the risk of plaque build-up, which improves the prognosis of the restoration by postponing the need for extraction of natural teeth.





## THE EFFECTS "BEFORE" AND "AFTER"



ARKONA



- Comparison of the condition of the teeth before and after the procedure, which revealed a beautifully modeled stabilizing splint that allows for maintaining perfect oral hygiene. **COMCORD** turned out to be an excellent material, offering high durability and aesthetics. The use of this material allowed for minimally invasive stabilization of the teeth, which will significantly extend their functionality and comfort of use by the patient. For the doctor, working with **COMCORD** is particularly beneficial due to its flexibility, ease of modeling and quick application, which shortens the time of the procedure and increases the effectiveness of the treatment.







## BENEFITS OF USING COMCORD



**ARKONA**



- **Single-visit tooth stabilization procedure.**
- **Satisfaction of patient needs** - gratitude and satisfaction
- **Chance to preserve teeth that were previously considered at risk of loss**
- **Saving procedure time** - your profit
- **Minimally invasive approach**, without the need to prepare healthy tooth tissues
- **Possibility to cure patients who we have lost for various reasons so far**







# ARKONA

**Created by Dentists for Dentists**



[www.arkonadent.com](http://www.arkonadent.com)