



ARKONA

Created by Dentists for Dentists

Tooth restoration 25 **COMCORD** & NEXT

 QUICK AND EFFECTIVE SOLUTIONS TO SERIOUS PROBLEMS

ETCHGEL • MASTERBOND • GLAZE • FLOW-ART • COLOURANT • NEXT



www.arkonadent.com



- The most common procedure performed in a dental office is the treatment of caries. As a result of insufficient oral hygiene, especially in the interdental spaces, cavities appear on the contact walls, as in the case of this patient.
- The method of treatment in such a case is the removal of tissues changed by caries and their supplementation with an adhesive composite material - in this case, the NEXT composite.





CASE DESCRIPTION



ARKONA



- The patient came to the office for treatment and reconstruction of tooth 25. To ensure the durability and functionality of the work, a rubber dam and accessories were used to enable tight reconstruction of the lateral walls of the tooth.





- To ensure tight isolation and comfortable working conditions, we place a rubber dam. Then we carefully prepare the cavities without leaving carious tissues and place a matrix, which will allow the reconstruction of the tooth's contact walls.

STAGE 2



ARKONA



- The preparation surface is properly prepared for the use of the adhesive material by using **ETCHGEL**. We etch the dentine for 10 seconds and the enamel for 30 seconds, and then rinse the preparation for the same amount of time.



- Etching is a key step in the entire procedure because, by removing the smear layer, it ensures thorough penetration of the bonding system. This is extremely important because
- it is the correct use of the bond that determines the adhesion of the composite to the patient's own tissues.



STAGE 4



ARKONA



- We apply **MASTERBOND** to the etched and dried tissues, remembering to rub the liquid thoroughly into the tooth surface, and then blow for a total of 20 seconds. This will ensure that the material penetrates the tooth tissues. Then light cure the tooth for 15 seconds and we move on to composite modeling. It is important not to rush this stage, because it is thanks to it that our fillings maintain their long-term durability.





- We apply the FLOW-ART flow composite to the bottom of the cavity. The material, flowing into the boundary between the tooth and the matrix, will create a smooth transition between the natural tissues and the filling, preventing microleaks, which significantly increases the durability of the fillings we make.

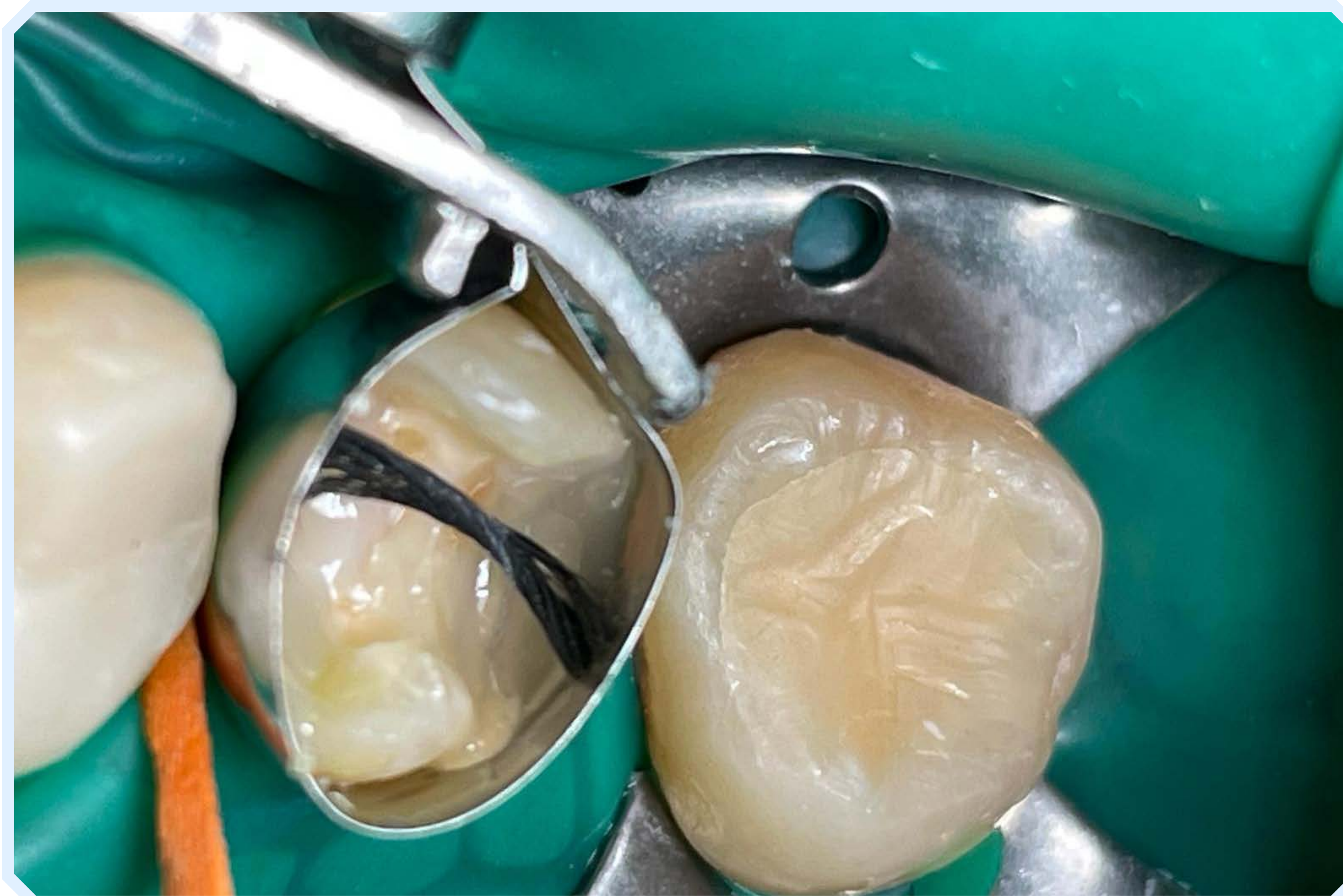




STAGE 6



ARKONA



- We measure what length of **COMCORD** will be needed to reinforce the premolar restoration.





- We place the cut fiber fragment in the tooth. Using **COMCORD** in our dental practice, we can quickly increase the durability of the work we do by using a material that integrates perfectly with the composite we use almost all the time.





STAGE 8



ARKONA



- We adjust the arrangement of the fragment to our needs and then light cure it according to the polymerization table. The next step is to model it with NEXT composite.





- We reconstruct the remaining tissues with NEXT composite. It is characterized by high mechanical strength regardless of the color and power of the lamp used for polymerization, guaranteeing safety and durability of your work. These features ensure that the patient can bite safely.





STAGE 10



ARKONA



- To give a natural look and make the restored tooth similar to the rest of the patient's dental arch, we can use **COLOURANT**. The accents that its use determines increase the aesthetics of the entire work.

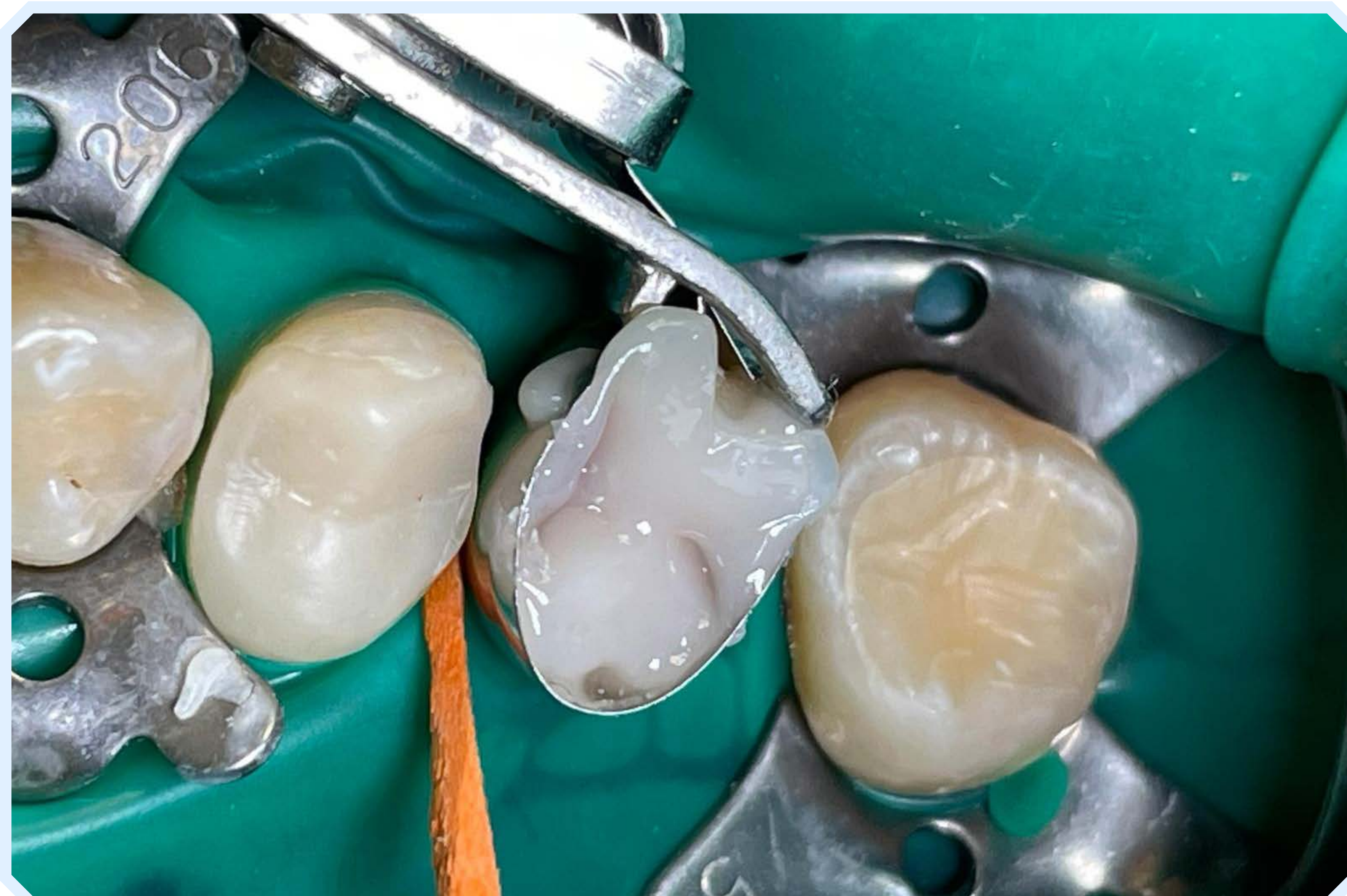




STAGE 11



ARKONA



- On top we add the last layer of NEXT composite, expose before and after removing the form. Then we move on to developing the final shape.





STAGE 12

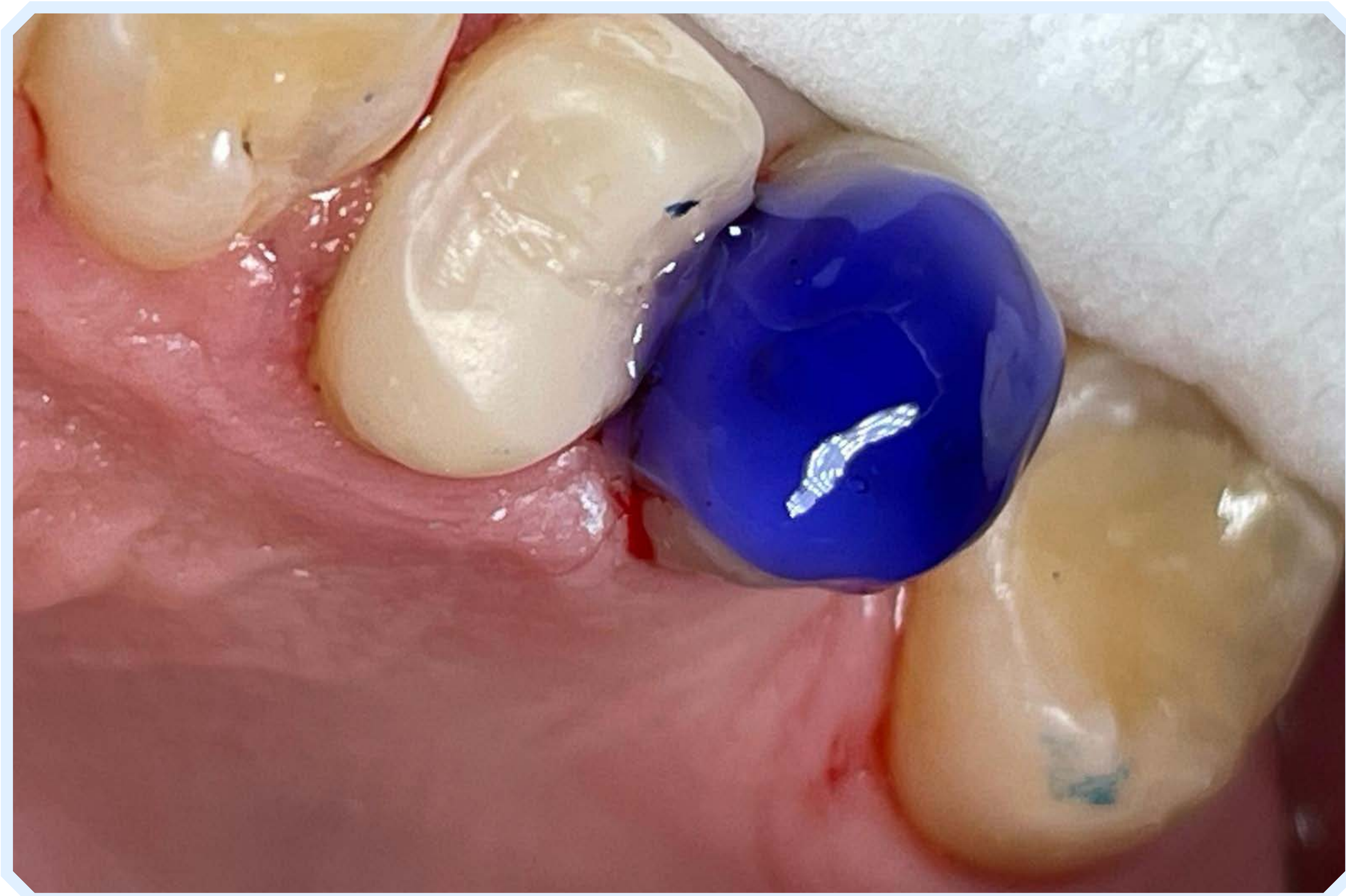


ARKONA



- We give the final anatomical shape to the tooth and adjust it in the bite using tracing paper. After adjusting the bite, we can proceed to the aesthetic finishing of our work using **GLAZE**.





- Etch the tooth for 30 seconds, then rinse **ETCHGEL** thoroughly with water. Re-etching should not be skipped if we want to combine the materials with each other. This step allows us to remove any contamination and prepare the surface of the composite for further work.



STAGE 14



ARKONA



- Correct etching is recognized by a matte surface that has been exposed to the etching material.



www.arkonadent.com



STAGE 15



ARKONA



- In the case of bleeding gums, it is worth using retraction threads so that the surface on which we are working remains free of blood. Contamination of the surface on which we are working would lead to a significant reduction in the adhesion strength of the materials used in this case, the consequences of which will be lower aesthetics and weaker durability of the filling.



www.arkonadent.com



STAGE 16



ARKONA



- The effect of using **GLAZE** provides shine without the need for time consuming polishing of the tooth.
- Intuitive and comfortable work with **GLAZE** will save time in the procedures you perform and increase the satisfaction of your patients.

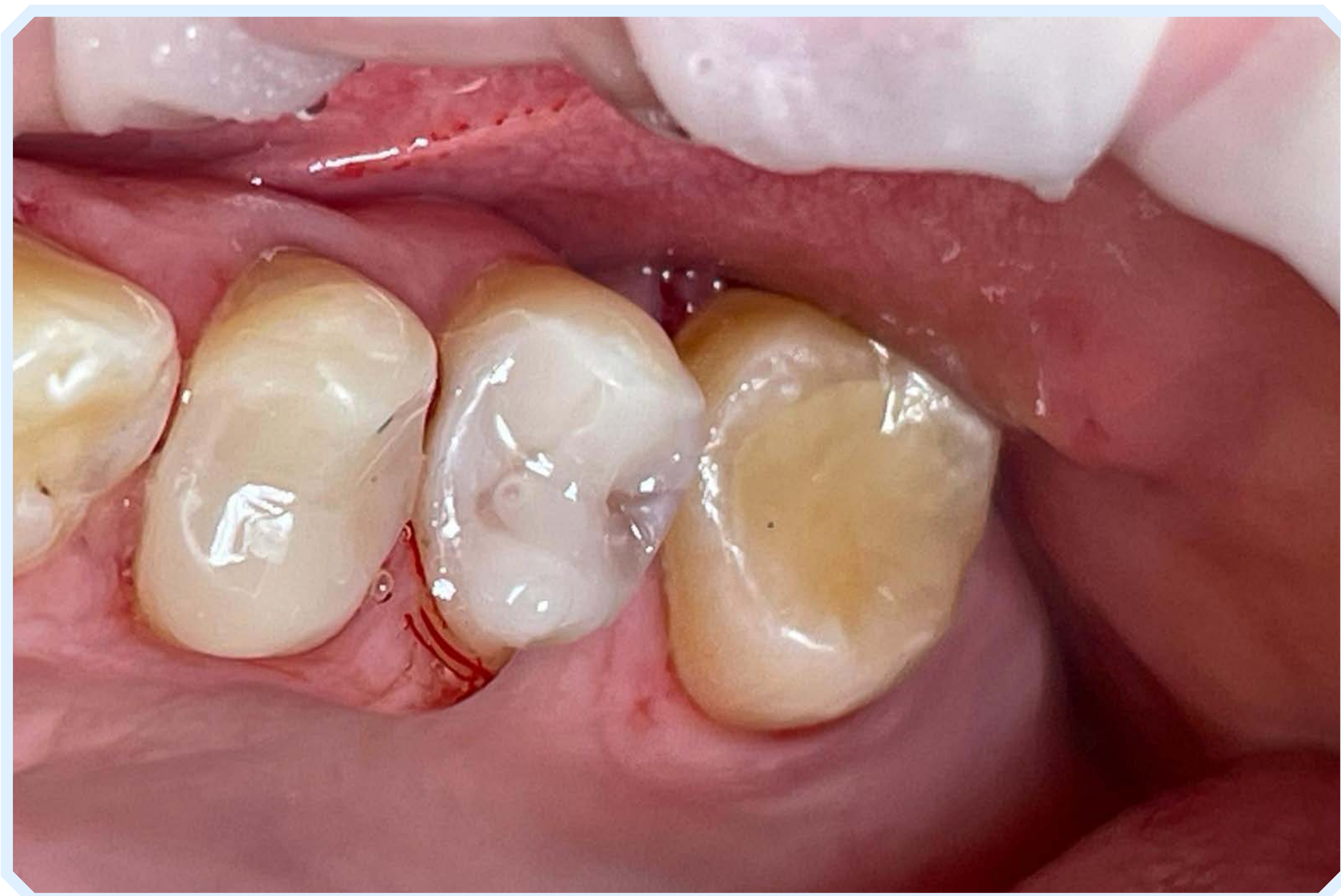




STAGE 17



ARKONA



- The extensive product range allows for the reconstruction of the tooth in its entirety with Arkona products. The mutual integrity of the materials and the tight reconstruction determine the durability of the filling for many years. Ensuring the safety and comfort of the Patient builds trust in the Doctor-Patient relationship, thanks to which the Patient will return to your dental office.





YOUR BENEFITS OF USING ARKONA PRODUCTS



ARKONA



- **Satisfaction of the patient's needs in one visit**
- gratitude and satisfaction
- **Easy correction** - good aesthetics and functionality of the tooth for many years
- **Saving time during the procedure** - your profit
- **A satisfied patient returns!**



www.arkonadent.com



ARKONA

Created by Dentists for Dentists



www.arkonadent.com