



**ARKONA**

Created by Dentists for Dentists

# Composite filling in tooth 25

 QUICK AND EFFECTIVE SOLUTIONS TO SERIOUS PROBLEMS

ETCHGEL • CREATE • FLOW-ART • MASTERBOND • GLAZE



[www.arkonadent.com](http://www.arkonadent.com)



## CASE DESCRIPTION



**ARKONA**



- The patient came to the office to treat tooth 25. The tissues changed by caries were processed and the tooth will be secured for reconstruction. Thanks to the convenience of using the materials necessary to supplement the tissues, the filling of the extensive second-class cavity took less than an hour. Such time savings guarantee us the satisfaction and gratitude of our Patients.

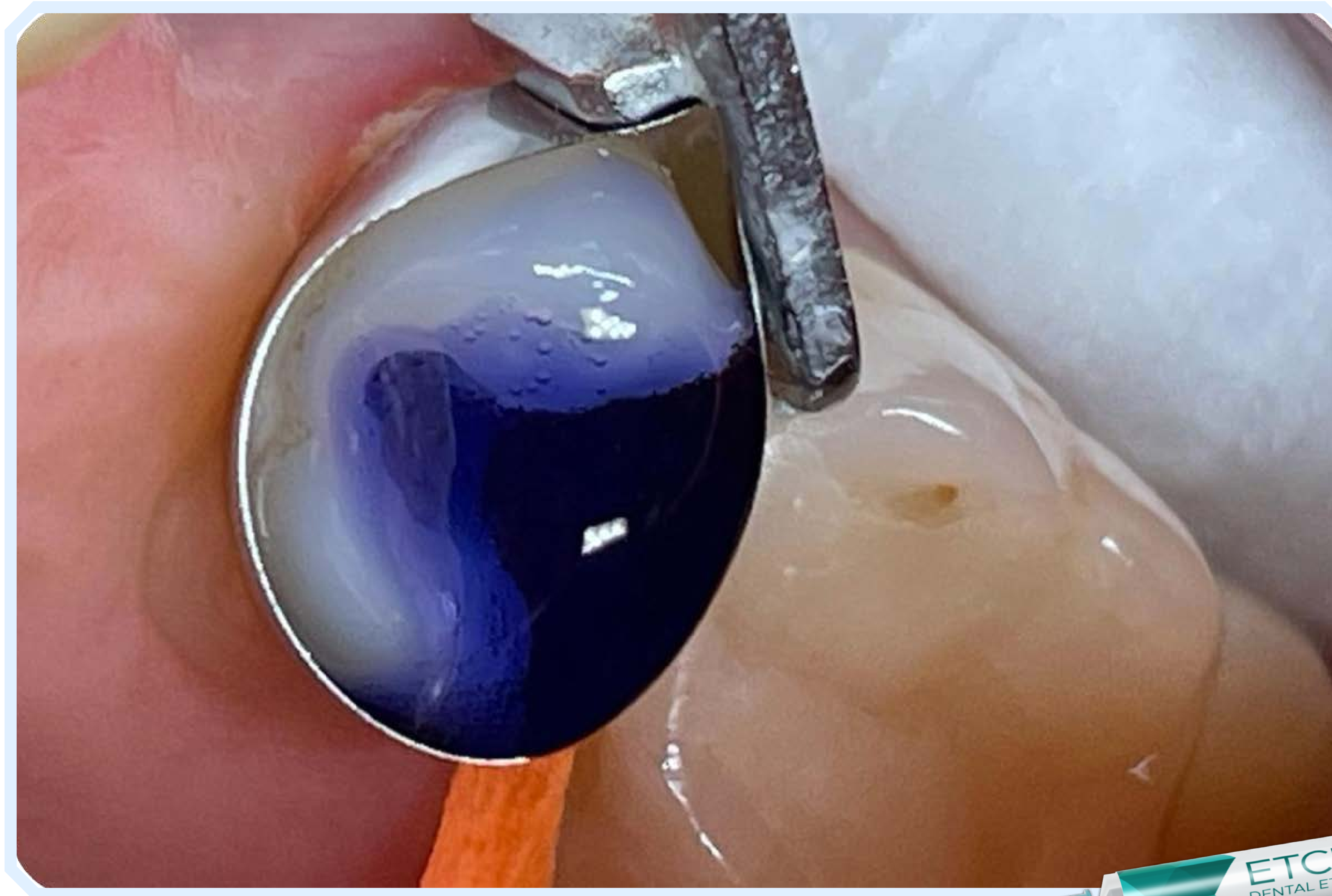




## STAGE 1



ARKONA



- After placing the form and securing the tooth with a wedge, we etch the dentine with **ETCHGEL** for 10 seconds and the enamel for 30 seconds, and then thoroughly rinse the substance with a syringe-air syringe. Phosphoric acid, which is the main component of the etchant, removes the smear layer that prevents the creation of a permanent restoration.





## STAGE 2



**ARKONA**



- Etching is a key step in the production of a filling because it ensures thorough penetration of the bonding system, which determines the adhesion of the composite to the patient's own tissues.





## ➔ STAGE 3



ARKONA



- We apply **MASTERBOND** to the etched and dried tissues, remembering to rub the liquid thoroughly into the tooth surface. This will ensure adhesion of the material to the tooth tissues. Then we irradiate the tooth for 15 seconds and proceed to modeling with composite. This extremely important stage will ensure that your patients will have fillings that will last for years.





- To prevent overhangs from forming at the bottom of the cavity, we apply FLOW-ART composite. Its liquid consistency and precise tip will provide your work with excellent tightness, comfort and quick work without the need to remove material at the contact point between the tooth and the filling.







## STAGE 5



ARKONA



- We reconstruct the remaining tissues with **CREATE** composite. Its high strength and plasticity ensured by carefully selected filler composition guarantees your work safety and durability, which are most important for patients and allow them to bite freely.



[www.arkonadent.com](http://www.arkonadent.com)





## STAGE 6



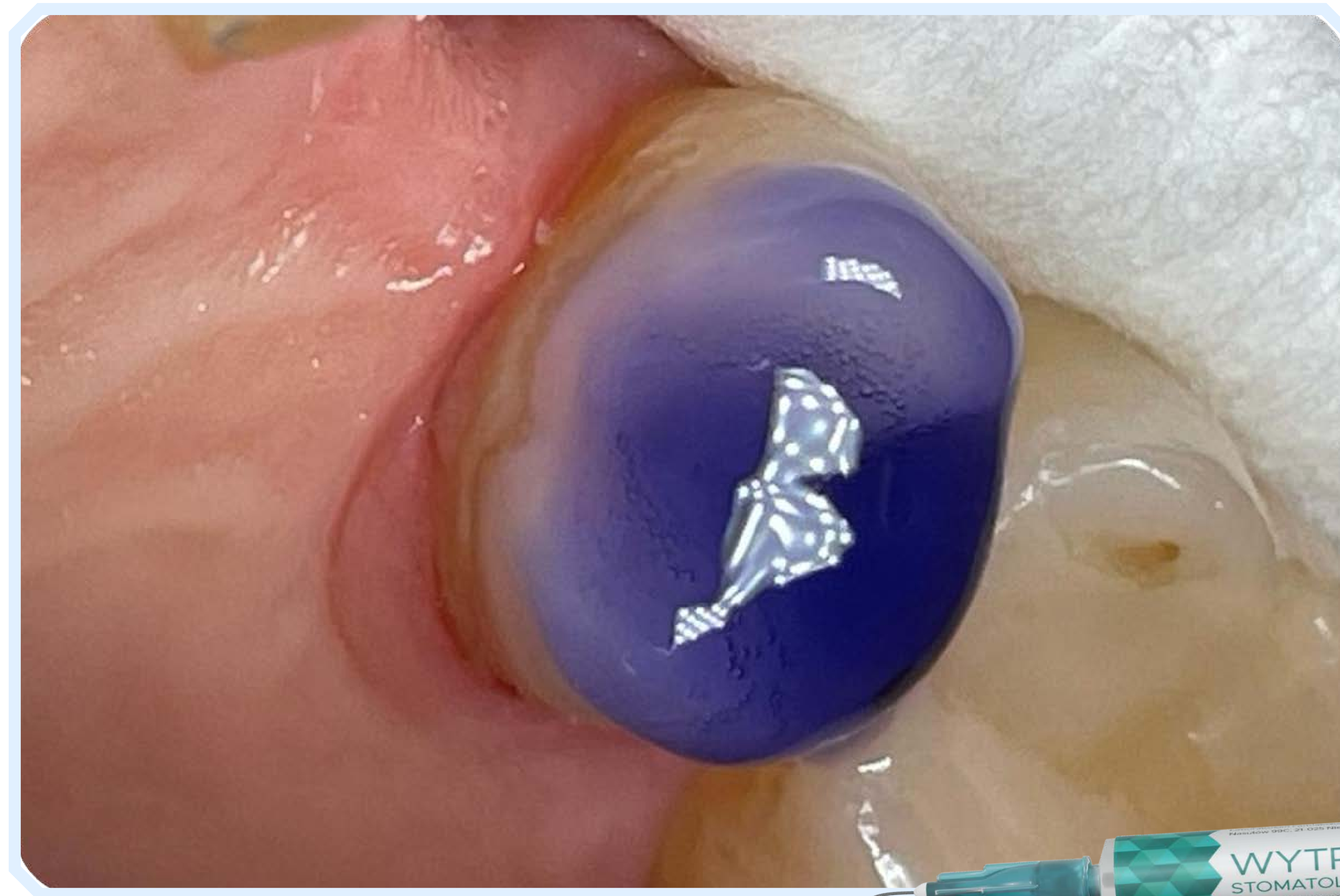
**ARKONA**



- After removing the form, we give the tooth its final shape and adjust it in the bite using tracing paper so that the patient feels comfortable in the new situation. After obtaining a satisfactory effect, we can move on to the last stage, which is to give our work a shine!







- Before applying the adhesive **GLAZE**, we etch the tooth again with **ETCHGEL**, this will ensure a permanent connection of the material with the tooth and the composite, and will save us time on mechanical polishing.
- The patient will then receive an aesthetic, shiny and healthy smile for years!





## FINAL EFFECT



ARKONA



- Visual effects of using **GLAZE** in combination with **CREATE** composite in your dental practice. Intuitive and comfortable work with these materials will save your work time and increase the satisfaction of your patients.



[www.arkonadent.com](http://www.arkonadent.com)





## YOUR BENEFITS FROM USING ARKONA MATERIALS



**ARKONA**



- **Satisfaction of the Patient's needs**  
- gratitude, trust
- **Precisely selected product compositions** - good aesthetics and functionality of the tooth for years
- **Saving time during the procedure** - your profit
- **A satisfied patient returns!**



[www.arkonadent.com](http://www.arkonadent.com)





# ARKONA

**Created by Dentists for Dentists**



[www.arkonadent.com](http://www.arkonadent.com)