



Created by Dentists for Dentists



ARKONA

# SEALING OF TOOTH 36 with FLOW-COLOR and ETCHGEL, patient 11 years old



QUICK AND EFFECTIVE SOLUTIONS TO SERIOUS PROBLEMS

MASTERBOND



[www.arkonadent.com](http://www.arkonadent.com)



## CASE DESCRIPTION



**ARKONA**



- In young patients, we often notice that the level of teeth cleaning is not as thorough as we would expect. In hard-to-reach places such as grooves and pits of lateral teeth, we observe the initial stages of caries - decalcification. In order to prevent the progression of caries, we can perform a sealing procedure. Using FLOW-COLOR colored sealant, we can effectively protect the patient's teeth, additionally giving the „little“ patient the fun of playing with colors. A satisfied patient and their parents is a patient who returns and recommends their dentist.







## STAGE 1



**ARKONA**



- The tooth should be cleaned and dried for the application of the etchant. The gel consistency of **ETCHGEL** and the precise tip allow us to apply the product only in the places we want. This protects the patient's tooth from unnecessary demineralization of too large a surface of the tooth enamel and its soft tissue of the oral cavity. Thanks to these features of the material, the time of the procedure is shorter and the comfort of our work is greater.





## STAGE 2



ARKONA



- We leave **ETCHGEL** on the tooth for about 30 seconds, then rinse it off with a large stream of water so that no material remains in the patient's mouth. Thanks to this short procedure, the etched tooth surface gains better wettability by the bonding system, which will allow us to better bond to the **FLOW-COLOR** sealant.







## STAGE 3



**ARKONA**



- The etched enamel surface has a whiter shade than the natural tooth color, which outlines the proper area for the application of MASTERBOND and then FLOW-COLOR.





## STAGE 4



**ARKONA**



- Before applying the bonding system, dry the tooth thoroughly.







## STAGE 5



**ARKONA**



- MASTERBOND is carefully rubbed in for a few seconds so that the entire etched surface is covered with the bonding system. This will ensure proper adhesion of FLOW-COLOR to the tooth, thanks to which the connection of the substances will be permanent.

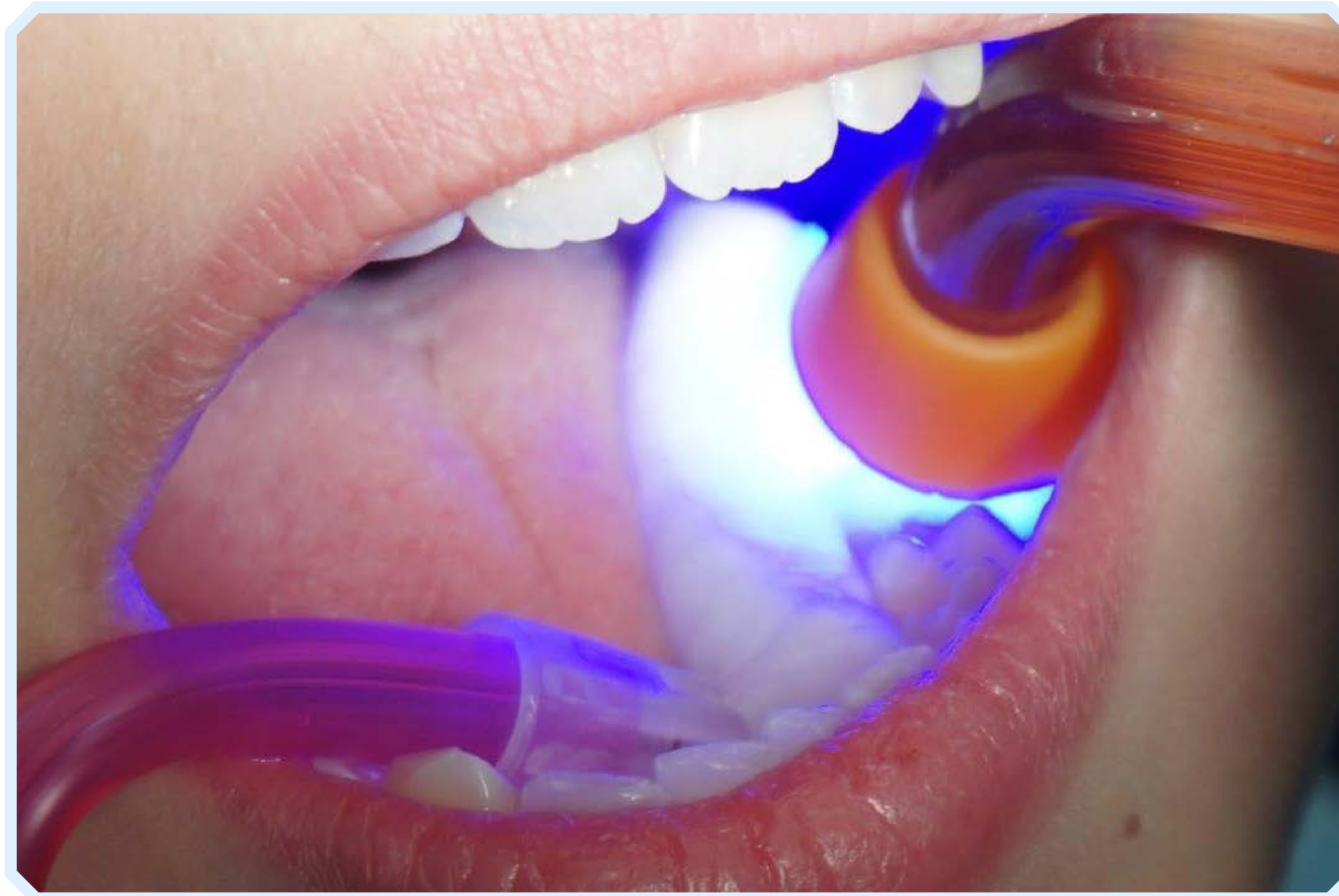




## STAGE 6



**ARKONA**



- Before polymerization, we gently blow the previously applied **MASTERBOND** so that the alcohol can evaporate.
- Then we polymerize the tooth for 10-15 seconds, depending on the parameters of our lamp.







- When the tooth is properly prepared, we can proceed to the FLOW-COLOR application. We apply a thin layer of material quickly and precisely, which is possible thanks to the thin tip adapted to work in posterior teeth. Thanks to the colored pigmentation of the sealant, our “little” patients and their parents can control the process of sealant abrasion, which indicates when they should return to you to repeat the procedure.





## STAGE 8



**ARKONA**



- By systematically repeating the procedure, the sealed teeth will be permanently protected. The sealing procedure is quick and effective.
- Caries prevention postpones more invasive dental treatment for your patient. You will spend little time on sealing or delegate the work to a hygienist, and you have a new procedure in your portfolio and returning satisfied patients.







## WHY IS IT WORTH TO USE COLOUR SEALANT?



**ARKONA**



- **Easy and quick procedure**
- **Non-invasive**, low-cost procedure
- **Fun with color**, joy and loyalty of “little” patients!
- **Easy control of the sealant after the procedure**, even by parents and children
- **A satisfied**, enthusiastic customer is your profit!



[www.arkonadent.com](http://www.arkonadent.com)



# ARKONA

**Created by Dentists for Dentists**



[www.arkonadent.com](http://www.arkonadent.com)