



Created by Dentists for Dentists



ARKONA

Reconstruction of tooth 24 using FLOW-ART and CREATE composite



QUICK AND EFFECTIVE SOLUTIONS TO SERIOUS PROBLEMS

ETCHGEL • MASTERBOND • GLAZE



www.arkonadent.com



CASE DESCRIPTION



ARKONA



- The patient came to the office to treat deep caries in tooth 24 extending to the contact walls. Thanks to the increased strength of the **CREATE** composite, we are able to permanently rebuild even a very damaged tooth without the need to cooperate with a prosthetic laboratory.





STAGE 2



ARKONA



- First, the surface must be properly prepared. To do this, we etch the dentine for 10 seconds and the enamel for 30 seconds **ETCHGEL**, and thanks to its precise tip, the acid will only reach the places we want. Then we rinse thoroughly, dry and apply **MASTERBOND** to allow the composite to adhere to the tooth tissues and the long-term durability of the filling.





STAGE 3



ARKONA



- We cover the deepest layer of the defect with a layer of FLOW-ART composite to obtain precise tightness and a smooth transition of the side wall filling. The consistency of the material means that it is able to fill the space perfectly and protect the filling from air bubbles and micro-leaks of bacteria.





STAGE 4



ARKONA



- We can easily rebuild missing tooth walls using **CREATE** composite. The comfort of work provided by the carefully selected composition of fillers guarantees us smoothness of the surface after polymerization and the convenience of rebuilding individual cusps.

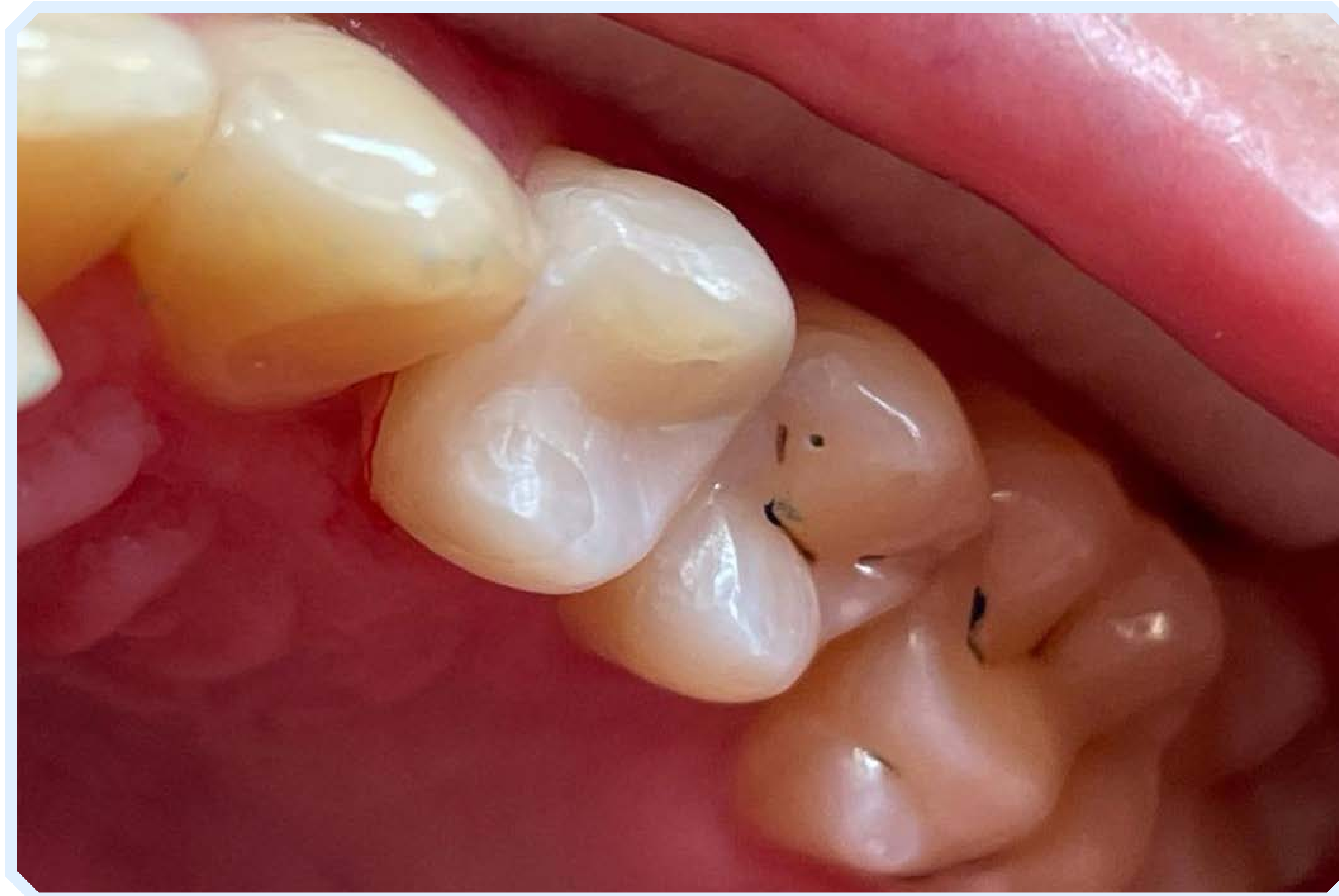




STAGE 5



ARKONA



- After removing the form, we give the tooth its final shape and adjust it in the bite using tracing paper. When the tooth reaches the correct contact with the opposing teeth, we can proceed to finish the work.





STAGE 6



ARKONA



- To do this, we re-etch the tooth with **ETCHGEL** so that the surface of the tooth and filling integrates with **GLAZE**, ensuring protection of the filling and smoothness of the entire tooth surface for many years.





- Using **GLAZE** saves our work time because in order to obtain the perfect shine we do not have to polish the tooth to the end exposing it to overheating. This short stage of the entire procedure guarantees the patient's satisfaction with the final effect and provides them with a comfortable feeling in the oral cavity.



YOUR BENEFITS OF USING FLOW-ART & CREATE



ARKONA



- **Effective treatment of tooth decay**, patient's health and safety
- **Perfect and long-term tightness of the filling** - patient's gratitude
- **Good aesthetics and time saving of the procedure** - job satisfaction and your profit
- **A satisfied patient returns!**



www.arkonadent.com



ARKONA

Created by Dentists for Dentists



www.arkonadent.com