



ARKONA

Created by Dentists for Dentists

Construction of a bridge based on COMCORD on teeth 21-23

 QUICK AND EFFECTIVE SOLUTIONS TO SERIOUS PROBLEMS

ETCHGEL • GLAZE



www.arkonadent.com



CASE DESCRIPTION



ARKONA



- A common problem that Patients struggle with is a missing teeth. In the case when a gap between teeth suddenly appears as a result of an injury, time plays an extremely important role. In particular, when the problem concerns the anterior segment, because it is constantly exposed in the smile.
- Both the Patient and his doctor want to fill the gap as quickly as possible for functional and aesthetic reasons.
- An excellent solution that does not require the involvement of a prosthetic laboratory is to use COMCORD to create an adhesive bridge. This simple procedure, which you will perform during one visit, will restore your patient's dream smile and mental comfort!





ARKONA



STAGE 1 – PREPARATION FOR THE PROCEDURE



- Before starting work, it is necessary to remove the remains of the tooth after the injury, and then secure the treatment area using a rubber dam. This will ensure protection of the patient's tissues and the accuracy and tightness of the reconstruction.

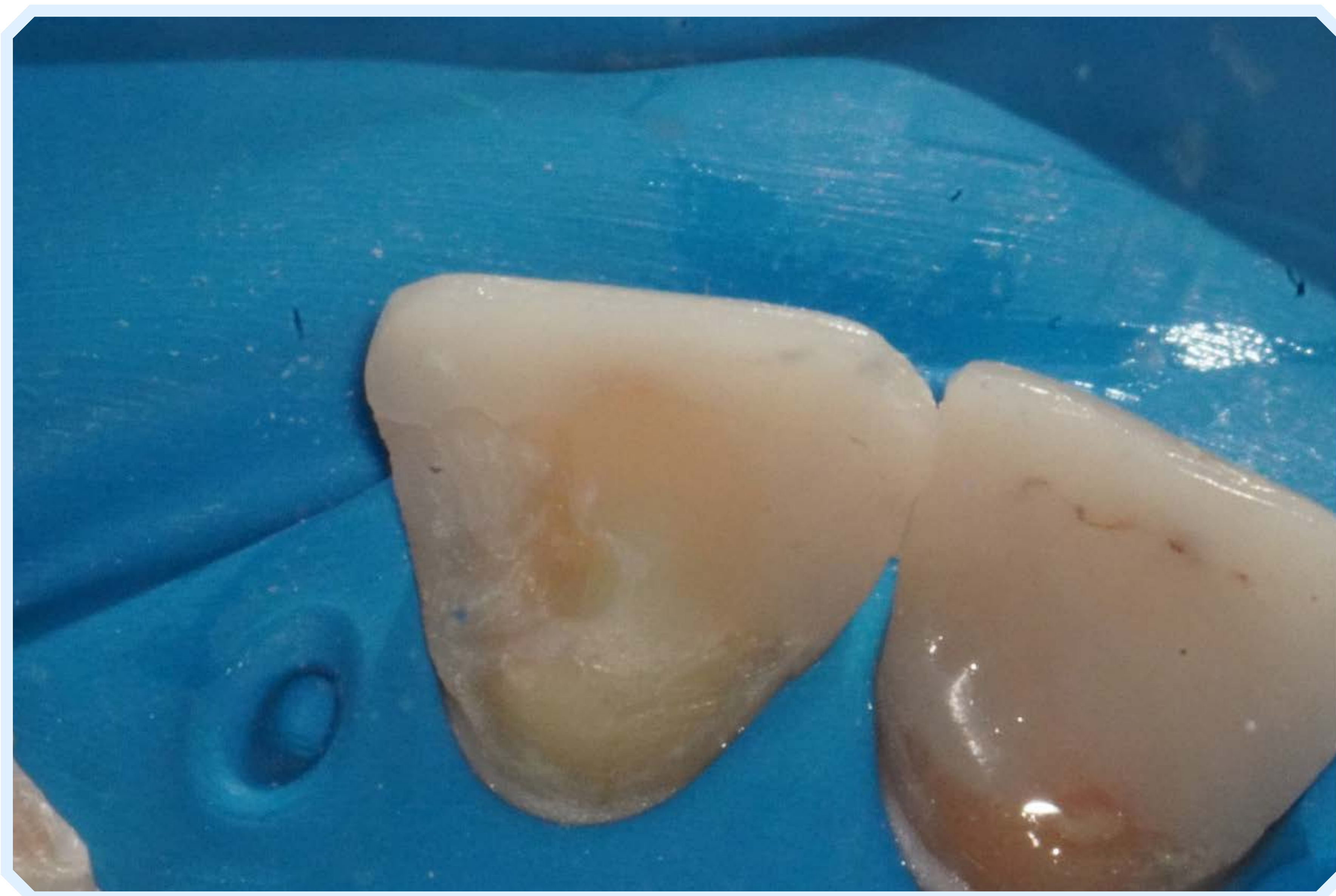




ARKONA



STAGE 2 - PREPARATION OF THE ABUNDANT TEETH



- Thanks to the isolation, the preparation of the abutment teeth takes only a short time. Remember to thoroughly remove caries and remnants of old fillings. The prepared surfaces should be thoroughly etched with **ETCHGEL**, rinsed, dried and covered with the **MASTERBOND** bonding system in order to create **COMCORD** adhesion with the tooth tissues.





ARKONA



STAGE 3 - CONSTRUCTION OF THE ADHESIVE ARCH AND RECONSTRUCTION OF THE MISSING TOOTH



- After appropriate preparation of the prepared areas in the adjacent teeth, the final reconstruction is made based on the previously measured COMCORD section.
- After its polymerization, we rebuild the missing tooth using composite, remembering to maintain the anatomical shape of the teeth and to adjust the reconstruction in the bite.





STEP 4 - GLAZING



ARKONA



- After adjusting the restoration in occlusion, we move on to the final stage of work, which is to give it a shine. **GLAZE** is perfect for this purpose, the use of which allows you to obtain a polished and shiny tooth without the need for mechanical polishing in a few seconds!





YOUR BENEFITS OF USING COMCORD



ARKONA



- **Single-visit filling of missing teeth.**
- **Satisfaction of patient needs** - gratitude and satisfaction
- **Easy to make corrections** - good aesthetics and functionality of the tooth for many years
- **Saving time of the procedure** - your profit
- **Non-invasive possibility of filling missing teeth**
- **Possibility of curing patients, whom we have lost for various reasons so far**





ARKONA

Created by Dentists for Dentists



www.arkonadent.com